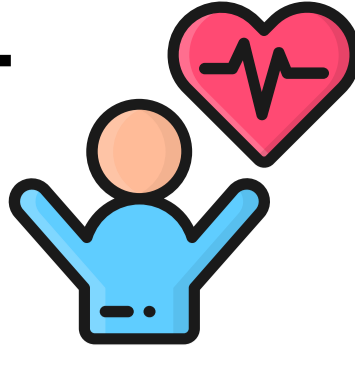


KENNEDY KRIEGER INSTITUTE: NEUROBEHAVIORAL INPATIENT OUTCOME DATA

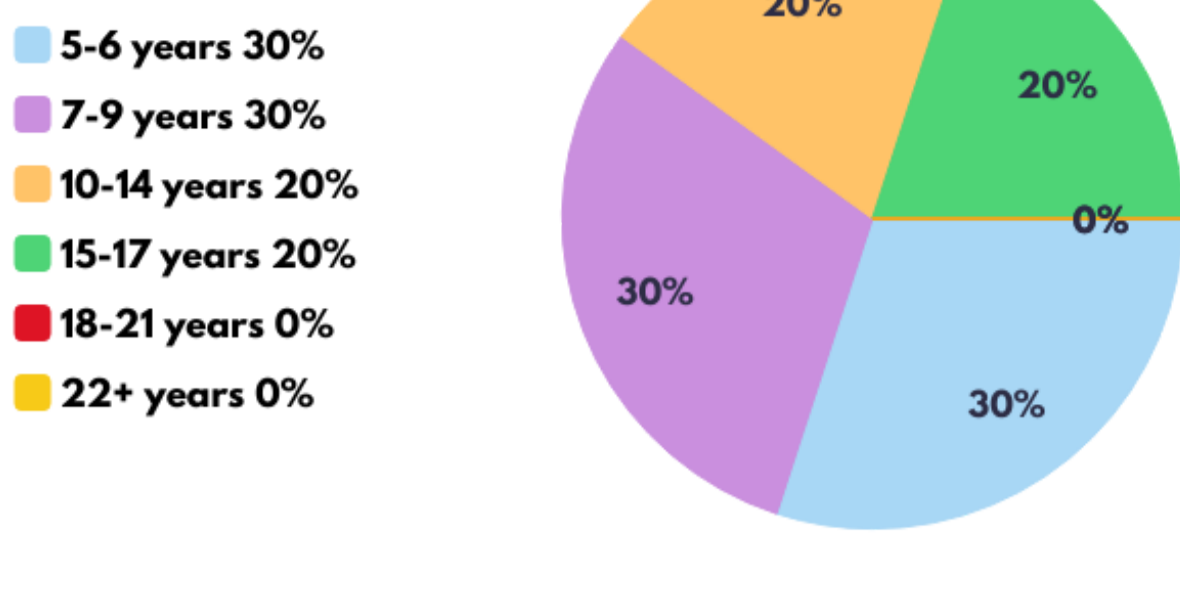


FY 22

Who is treated on the inpatient Neurobehavioral Unit at Kennedy Krieger?

During fiscal year 22*, 29 patients were treated on the inpatient Neurobehavioral Unit at Kennedy Krieger.

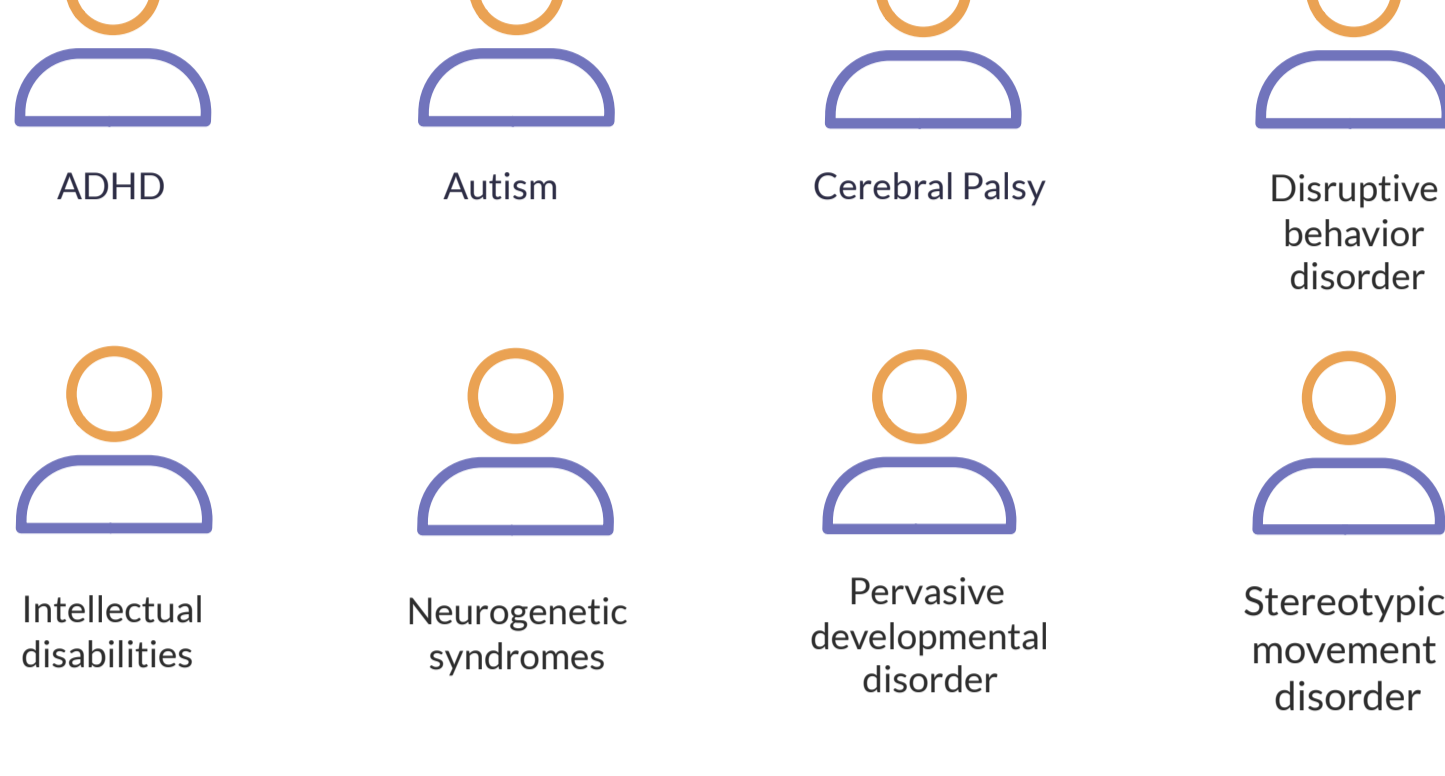
Below is the age breakdown of those patients:



Diagnoses Treated

The Inpatient Neurobehavioral Unit treats children and adolescents who, collectively, have a variety of diagnoses.

Previous patient diagnoses include, but are not limited to:



Treatment Approach

Assessments are performed regarding of your child's problem behaviors and a customized treatment plan is designed to meet their needs.

Families are an integral part of each child's treatment, and are encouraged to participate in their child's treatment.



Interdisciplinary Treatment Team

Patients with severe behavior disorders may have complex needs. An experienced interdisciplinary treatment team works with every patient and their family.

Our treatment team may include:

- Behavior data specialists
- Certified nursing interns
- Board-certified behavior analysts
- Clinical specialists
- Neurologists
- Nurse case managers
- Nurse practitioners
- Pediatricians
- Psychologists
- Psychiatrists
- Registered nurses
- Social workers
- Special educators
- Speech-language pathologists



Other disciplines are consulted on a case-by-case basis.



How much therapy do patients receive while being treated on the Inpatient Neurobehavioral Unit?

Patients on the Inpatient Neurobehavioral Unit receive three to four hours of direct behavioral therapy daily. Academic and vocational (when applicable), and self-care training are provided throughout the day. Speech therapy is provided two to three times per week.

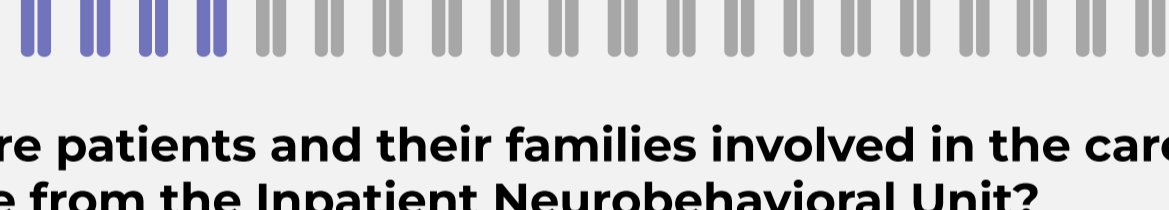
What happens if a patient gets acutely sick or has a medical emergency while an inpatient at Kennedy Krieger?

Kennedy Krieger has Pediatric Advanced Life Support-certified staff on-site 24 hours a day, seven days a week, with the equipment and processes in place to respond to medical emergencies.



Due to our proximity to and affiliation with The Johns Hopkins Hospital, we are able to admit patients with intensive, but stable medical needs, such as those requiring a ventilator for breathing.

Occasionally, these more intensive medical needs require unplanned transfers to acute care. **In fiscal year 2022*, 4 patients with severe behavior disorders required an unplanned transfer to a higher level of care.**



How are patients and their families involved in the care they receive from the Inpatient Neurobehavioral Unit?

Kennedy Krieger is committed to providing person and family-centered care which is a collaborative approach to the planning and delivery of services. Our services reflect the person and family-centered care principles of participation; collaboration; information sharing; dignity and respect; and equity, diversity and inclusion.

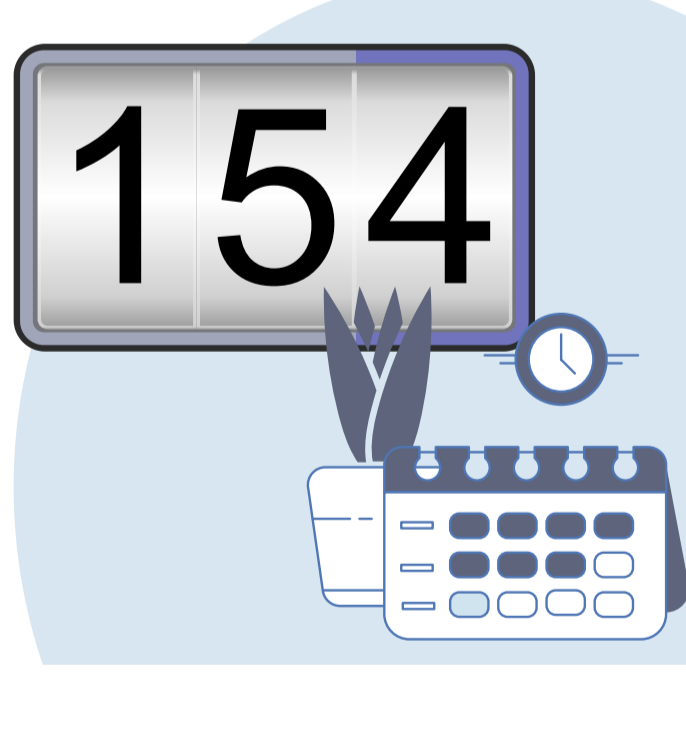


Individuals served and their family members are encouraged to participate in treatment planning, goal setting, family meetings, and education and training sessions.

How long do most inpatients receive treatment from the Inpatient Neurobehavioral Unit?

Treatment varies from one patient to another, based on their needs and goals.

In fiscal year 2022*, the average length of treatment for individuals with severe behavior disorders was 154 days.

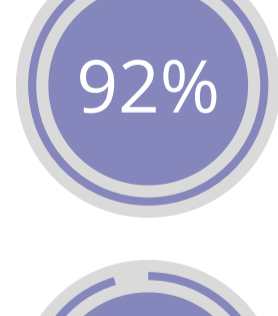


What kinds of improvements might patients be expected to make while receiving treatment from the Inpatient Neurobehavioral Unit?

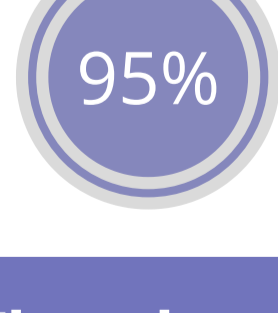


Our outcome data support the effectiveness of our approach.

During fiscal year 2022*:

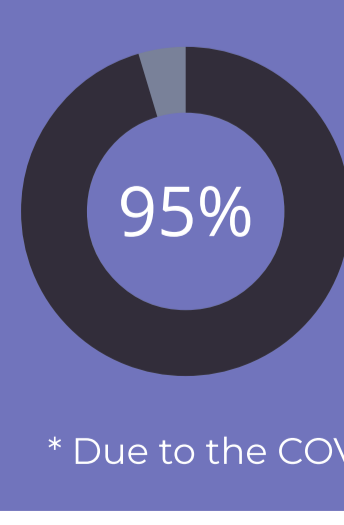
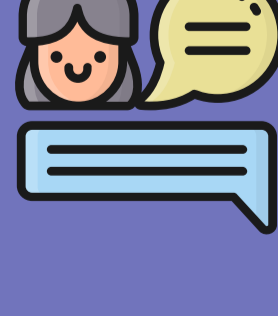


92% of patients met their admission goals.



95% of patients were discharged with at least one caregiver prepared to follow and maintain their treatment plan.

What do patients and their families say about their experience at Kennedy Krieger Institute?

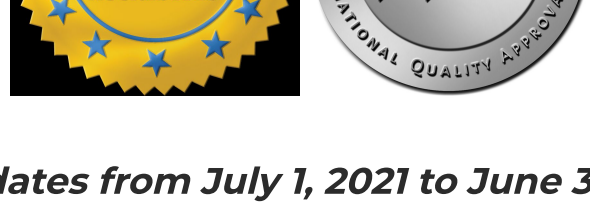


95 percent of families reported overall satisfaction with their experience.*

* Due to the COVID-19 pandemic, patient satisfaction data is from FY21

Does Kennedy Krieger have special accreditation?

Kennedy Krieger Institute is accredited by the **Commission on the Accreditation of Rehabilitation Facilities (CARF)** and **The Joint Commission**. Every three years, both organizations review the Institute to ensure all its programs meet or exceed the very high standards it sets for the care of its patients.



*FY 22 represents the dates from July 1, 2021 to June 30, 2022.